

NOTIFIER TECH TIP

AFP2800

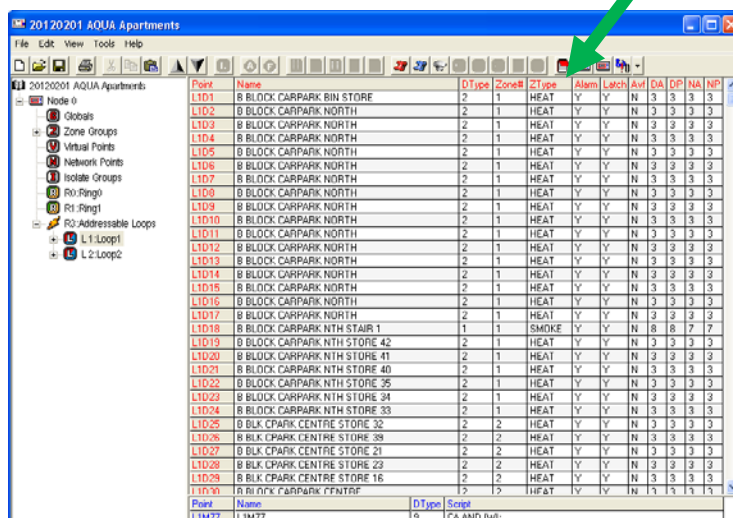
PCI Tool

“PCI ZType Descriptor”

v1.2

The “ZType” descriptor is used to display the type of alarm that has occurred, when the alarm is displayed on the main display of the fire panel. This is a requirement of AS4428, which also lists as examples the following acceptable descriptions and abbreviations, which are selectable by using the drop down box in the ZType column when configuring the devices, using the PCI programming tool.

- FIRE
- SMOKE
- HEAT
- FLAME
- FSW (flow switch)
- MCP (manual call point)
- VMD (valve monitor device)
- PSW (pressure switch)
- SPR (sprinkler)



Please take note of the following when programming the ZType field using the PCI tool:

Standalone Panels

It is possible to enter alternative descriptions in the ZType field, by directly typing the desired descriptor using a keyboard, to enable a more useful or informative descriptor to be used. As an example, instead of “SPR”, the whole word “SPRINKLER” could be entered. The entered descriptor will display correctly on the local panel.

If there is any possibility that the standalone panel will be networked in the future, then consideration should be given to the paragraph below.

NFN Networked Panels, Gateways or when connected to OnyxWorks

When using networked panels, the drop down box **MUST** be used to select the desired descriptor, on **ALL** panels located on the network. This is required because the network only has the ability to transmit the “Standard” descriptors as listed in the drop down boxes.

If descriptors other than the “Standard” descriptors are entered, then when alarms are reported to other panels via the network, the “Alarm Type” will present on the display with one of the standard descriptors, which may have no relation to the actual device ZType that has been manually entered on the remote panel.